

UNIDAD 8º B

Superficie cubierta

37.30m²

Superficie descubierta

7.40m²

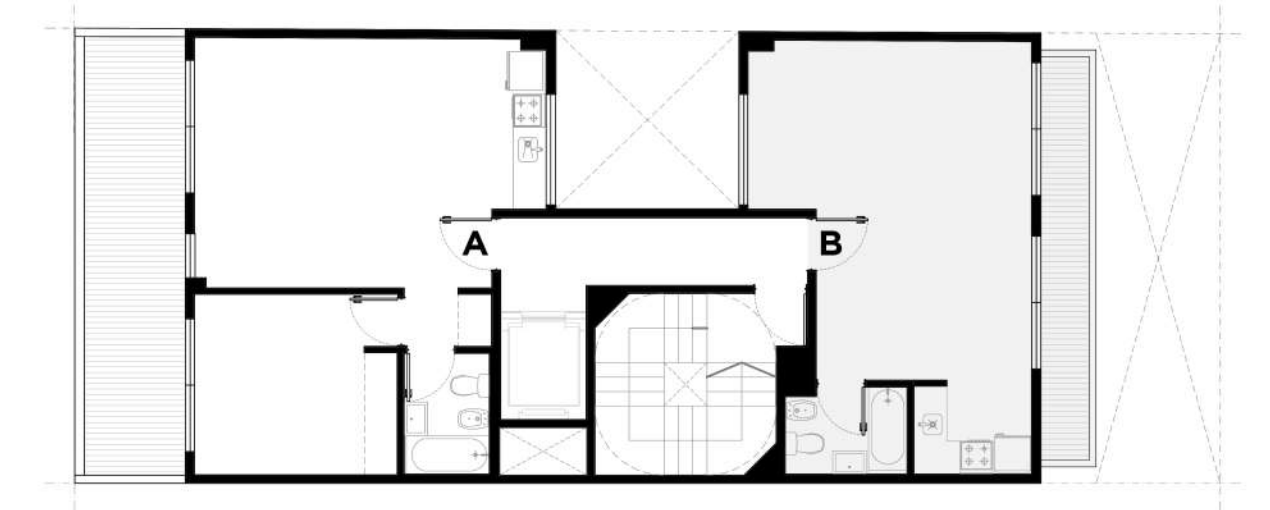
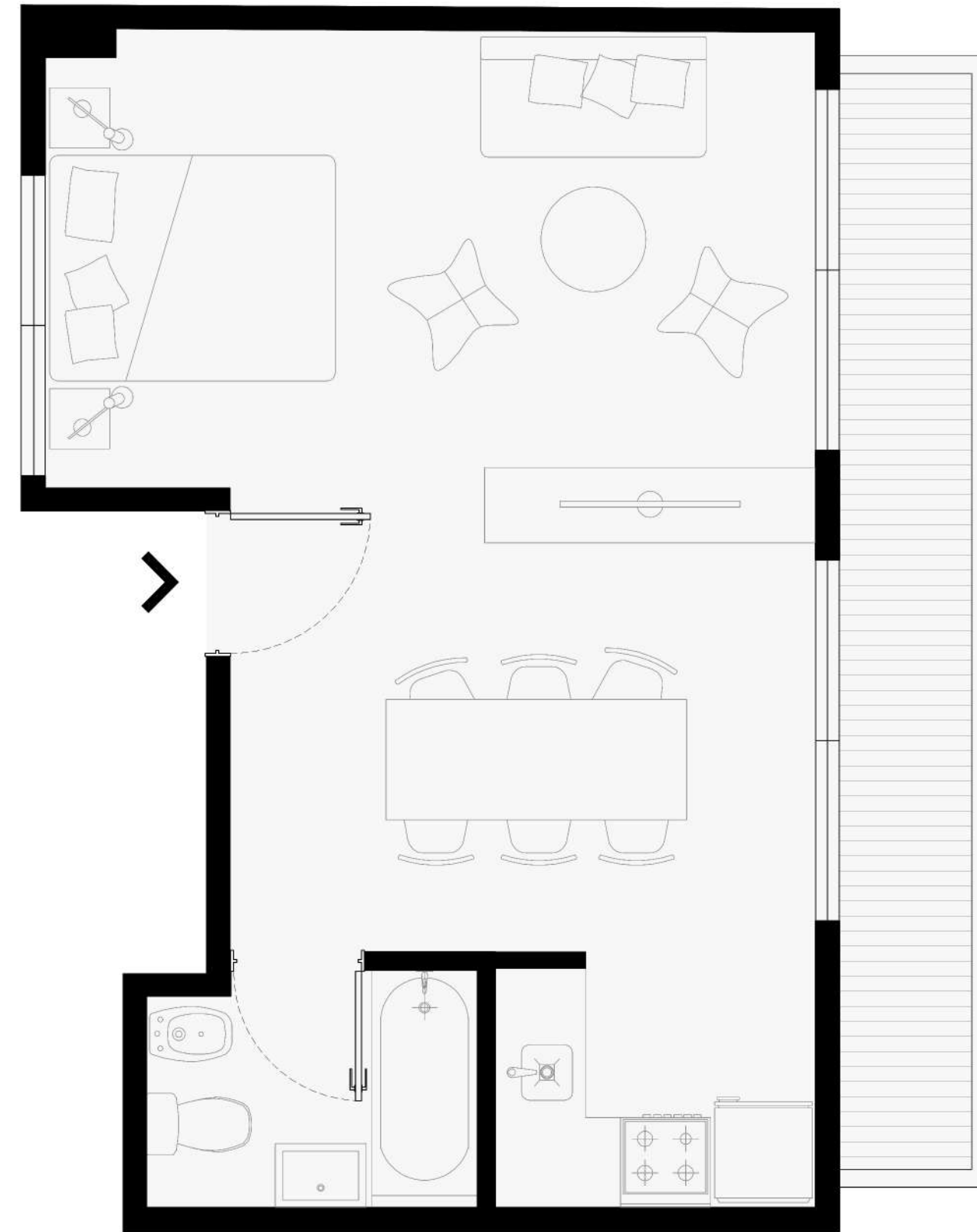
Ambientes

1

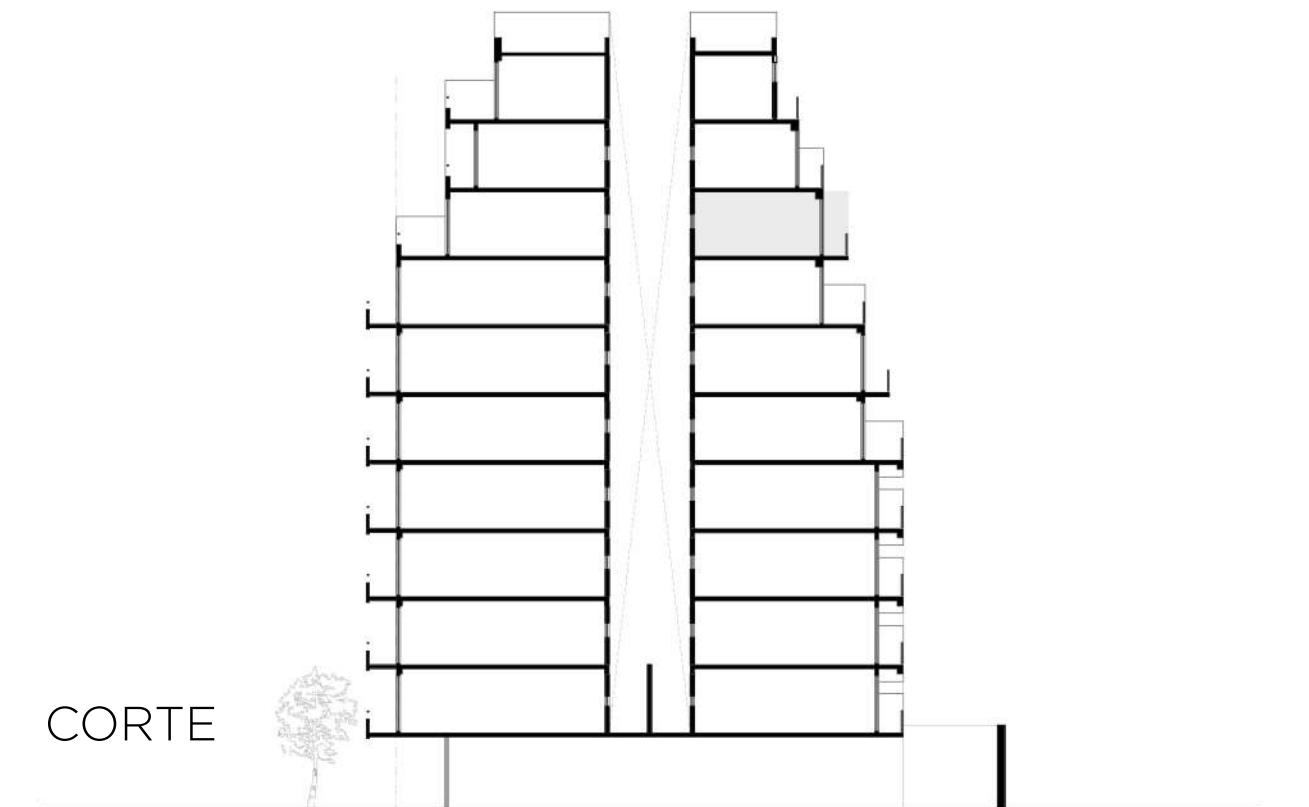
Ubicación

Contrafrente

LIVING-COMEDOR-DORMITORIO 6.15m. x 3.90m./5.11m.
BAÑO 1.55m. x 2.20m.
COCINA 2.13m. x 1.67m.
BALCÓN 1.68m. x 7.80m.



PLANO GENERAL



CORTE