

UNIDAD 2º A A 11º A

Superficie cubierta

32.80m²

Superficie semi-cubierta

4.60m²

Ambientes

1

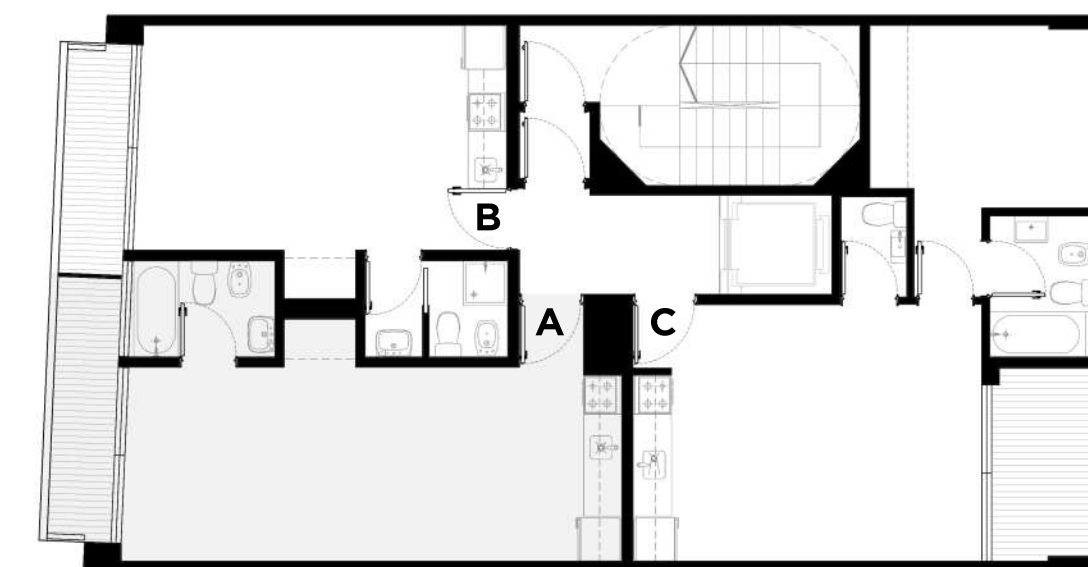
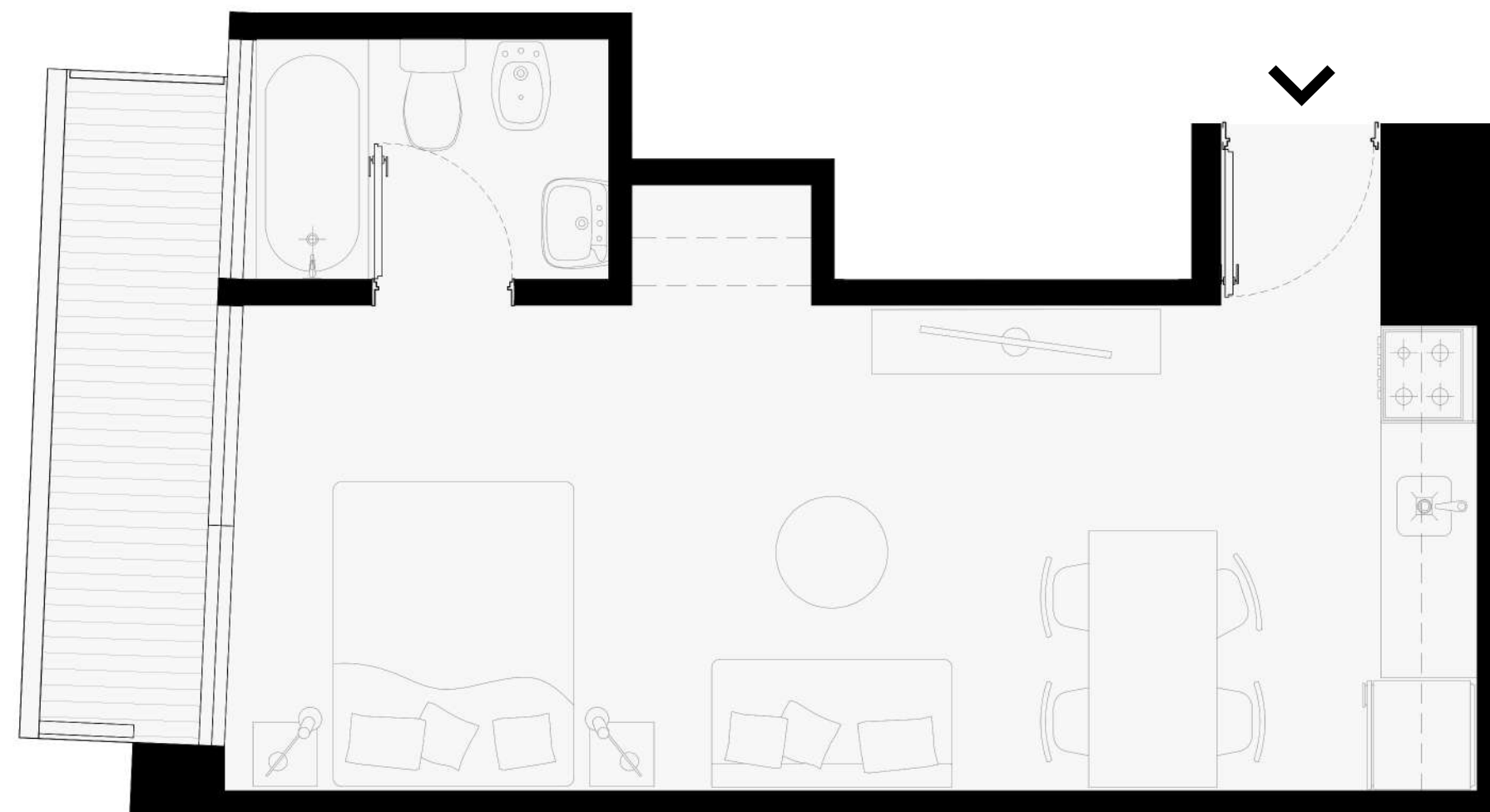
Ubicación

Frente

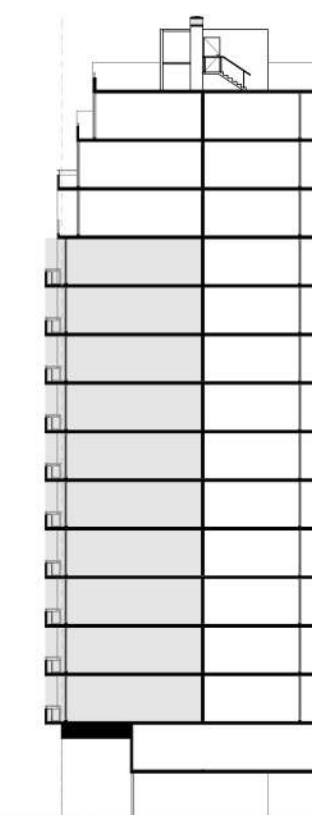
LIVING-COMEDOR-COCINA-DORMITORIO 3.03m. x 7.75m.

BAÑO 1.50m. x 2.20m.

BALCÓN 1.12m. x 4.12m.



PLANO GENERAL



CORTE